

Civil Rights Data Collection (CRDC) ***Webinar:***

Using the Data in Local Work
June 28, 2018



Liz Olsson ♦ NAACP Legal Defense Fund

Harold Jordan ♦ ACLU Pennsylvania

Amir Whitaker ♦ ACLU SoCal Attorney &
UCLA Researcher

Agenda

- I. Introduction - Liz**
 - Why CRDC and how to use as an advocacy tool?
- II. Overview of CRDC website and accessing local info - Harold**
 - Accessing Local Information
 - Charts/diagrams that can be generated
- III. Analyzing and Understanding the Data – Amir**
 - Data flaws and issues
 - Data analysis tips
 - Publication preview
 - National and state analysis
- IV. Closing and Next Steps – Liz**
 - Collection of issues (e-mail to Liz at eolsson@naacpldf.org)
 - ESSA data requirements and timeline

Intro to CRDC and Local Work

Liz Olsson
NAACP Legal Defense Fund

What is the CRDC?

- The U.S. Department of Education (ED) conducts the Civil Rights Data Collection (CRDC) to collect data on key education characteristics of school districts.
- Office of Civil Rights (OCR) collects the data to ensure that districts are meeting their civil rights obligations.
- Conducted usually every two years.
 - Current data is for 2015-2016
 - The next data collection will be for 2017-2018.
- Data on individual schools and districts.

What is the CRDC?

- Covers a number of school characteristics, like:
 - Access to Advanced Placement courses, Math and Science courses,
 - SAT/ACT tests,
 - Preschool programs,
 - Percentage of first-year teachers,
 - Enrollment demographics, and
 - Discipline.
- Data is disaggregated by race/ethnicity, sex, limited English proficiency, and for students with disabilities and students without disabilities.

Why CRDC Matters?

- It matters more than ever – it is connected to ESSA
- CRDC is a tool for members to use in their local work
- Reveals school climate disparities related to discipline, restraint and seclusion, retention, and bullying
- Tracks personnel and non-personnel expenditures
- Can be used to check that data is being reported accurately
- Gives State/National estimations

What new info is in the 2015-2016 CRDC?

Several elements were optional for 2013-2014 but required for 2015-2016, including:

- Number of incidents of violent and serious crimes
- Number of school days missed by students who received out-of-school suspensions
- Number of students transferred to alternative schools
- Number of instances of corporal punishment PreK-12
- Number of allegations of harassment or bullying on basis of sexual orientation or religion
- Number of FTEs for psychologists, social workers, nurses, security guards, and SROs

Additional elements included data on school characteristics, early childhood education, college and career readiness, & school staffing/resources.

Local Issues with Reporting + Definitions

- Local districts do not always report data accurately to OCR
- If a district fails to report certain data, a zero will appear
- There may also be cases where the data on the OCR website does not match the data you can access locally. One reason may be different rounding of numbers attempting to maintain privacy
- Some districts may not accurately report particular disciplinary categories because the way OCR defines a category does not match the district's definition

Holding Districts Accountable

- Schools and districts can be held accountable if you know that the data reported is incorrect, and you have documentation to prove otherwise.
- For example, in Holmes County Mississippi:
 - During the previous data collection, it was reported that no students were referred to Law Enforcement; but through Nollie Jenkins Family Center's organizing we had evidence that at least four students had been referred.
 - With regards to school-related arrest, data from the previous collection reported a lower number than actual in elementary, middle and high schools.

Questions

Any questions so far?



HOW TO: Explore the OCR Website

**Harold Jordan
ACLU Pennsylvania**

OCR website has evolved over time



Features added in 2016:

- Data Analysis Tools - 3 tools that automate the process of making calculations and comparisons
<http://ocrdata.ed.gov/DataAnalysisTools>
- Discipline Report – but does not include arrests & assignment to alternative schools
- But some tools do not yet use the 2015-16 data
- And some tools use data only for school-administered discipline (suspensions, etc.), not police-administered discipline (arrests)



“School and District Search” and “Detailed Data Tables” display the most complete discipline data





Four Approaches to Accessing Data

Go to ocrdata.ed.gov

HOW TO: Explore the District Data Summaries from Office for Civil Rights

Approaches to Pulling/Displaying Data

1. Use School and District Search 
 - ✓ Access to complete data w/visuals
2. Use Detailed Data Tables
 - ✓ Displays all categories of discipline data in tables
 - ✓ #s and %s can be downloaded in Excel, CSV, or PDF
 - ✓ Best choice for the data hound, but you must do the math
3. Use OCR's Data Analysis Tools
 - ✓ But only the Outcome Calculator uses 2015 data (so far)
 - ✓ Not all tools report arrest trends
4. Use Discipline Report 
 - ✓ Easy and quick snapshot with helpful line graphs
 - ✓ Does not report arrest and alternative schools data
 - ✓ Displays suspensions by race and gender in a unique way

HOME

SCHOOL & DISTRICT
SEARCHDETAILED DATA
TABLES

DATA ANALYSIS TOOLS

SPECIAL REPORTS

STATE AND NATIONAL
ESTIMATIONS2015-16 FIRST LOOK
REPORTADDITIONAL
RESOURCES

FAQ/USER GUIDE

OFFICE FOR CIVIL
RIGHTS (OCR)Looking for the
2015-16 CRDC?

CRDC

Civil Rights Data Collection

DATA ANALYSIS TOOLS



Comparison Graphs and Data

Select up to 12 schools, districts and/or states and view and compare data elements

Examples:

- * For 10 schools, a district and a state, compare the in-school suspension rates for black students
- * Compare the multiple out-of-school suspension rates for LEP students across 10 districts in a state
- * Additional assistance is available through this [tutorial](#)



Detail Graphs and Data

Select up to 2 schools, districts or states and compare detailed data elements

Examples:

- * For two districts, compare single out-of-school suspension rates for students, by race/ethnicity
- * Examine one school's expulsion rates for students, by disability status
- * Additional assistance is available through this [tutorial](#)



Outcome Rate Calculator

Select up to 250 schools or districts and view and sort outcome rate calculations

Examples:

- * For 100 districts, view the out-of-school suspension rates for all students and by race/ethnicity
- * For 10 schools, view how much greater or lesser expulsion rates are for non-white students compared to white students
- * Additional assistance is available through this [tutorial](#)

Data Analysis Tools in a Nutshell

Comparison Graphs and Data

- Compare up to 12 individual schools, districts (or LEAs), or states
- For each one, rates are also compared to national rates for that category of discipline
- You have the option of generating a bar graph (default) or a table
- You can export data in Excel (from table option)
- **BUT No 2015-16 data yet**

Data Analysis Tools in a Nutshell

Detail Graphs and Data

- Similar to comparison graphs and data
- Limited to comparing two schools, districts (or LEAs), or states
- A much more detailed comparison (includes subcategories and interactive options)
- But does **not** allow you to compare to national rates
- You have the option of generating a bar graph (default) or a table
- You can export data in Excel (from table option)
- **BUT No 2015-16** data just yet

Data Analysis Tools in a Nutshell

Outcome Calculator

- **Includes 2015-16 data**
- Allows you to compare rates of ethnic/racial groups vs. whites
- Can select up to 250 schools or districts (LEAs)
- Reports OSSs and expulsions, **not law enforcement data**
- Generates tables only (no graphs)
- Can export table into Excel

Lesson 1 – School/District Search

ED.gov CIVIL RIGHTS Data Collection

CRDC > School/District Search

Find School(s) Find District(s)

Basic Search

To find the districts(s) that you are looking for, enter one or more search criteria and click 'District Search'

District Name: District ID: State (Choose 1 or more):

Street Address: City: Zip Code: Distance: Survey Year:

OCR Regional Office:

District Search **Reset Search Criteria**

Search Tip: If you are having difficulty finding your district, try entering only the city, zip and/or keyword in the name field.

Advanced Search Criteria

- Characteristics, Membership, Staffing and Finance
- College and Career Readiness
- Discipline

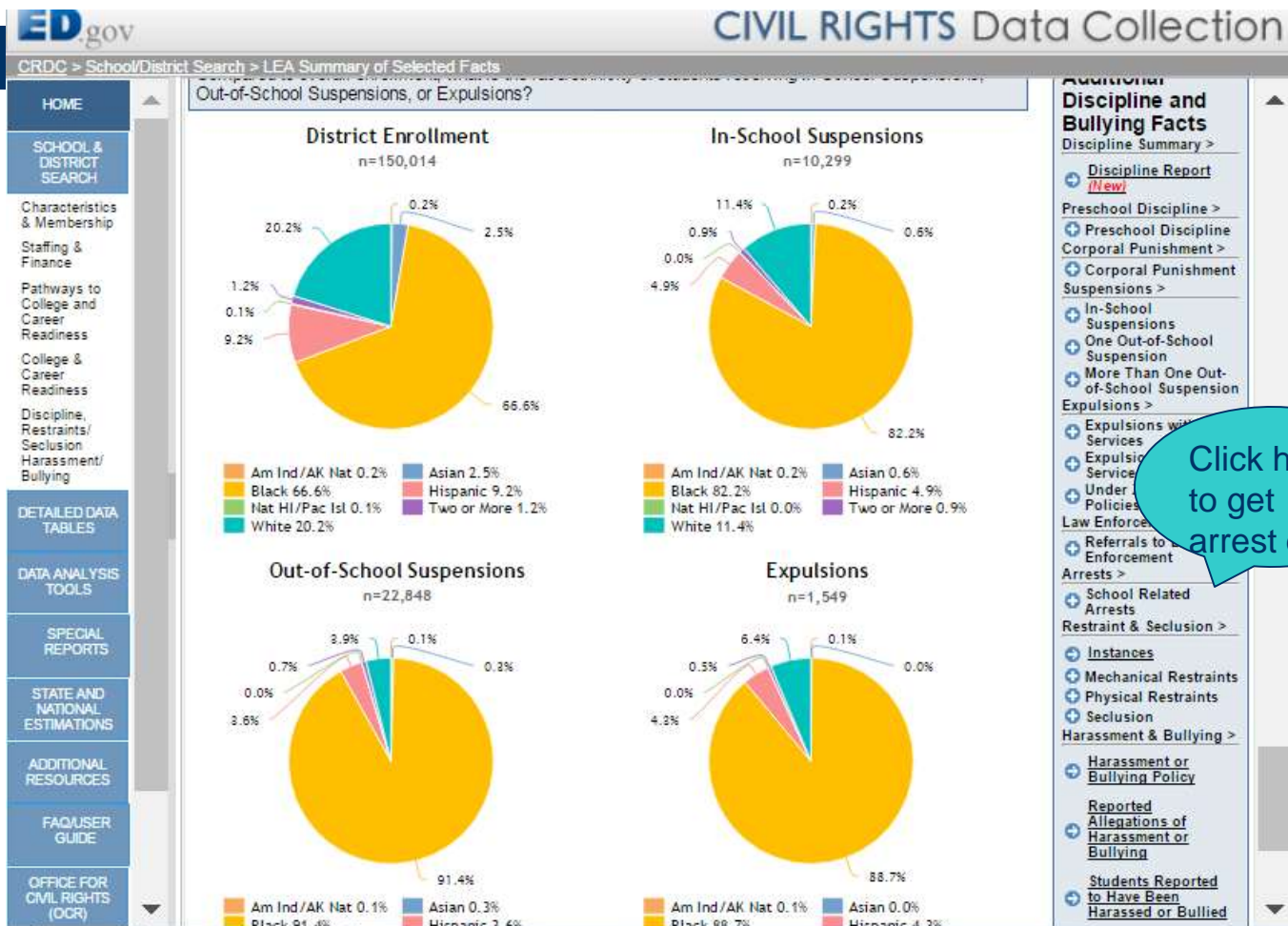
1 Records Returned for District Search Results

Click on the district name to view the associated profile. **Export to Excel**

Values shown below are displayed as percentages (except Total Enrollment) *All columns are sortable*

| District | State | Total | American Indian/ AK Native | Asian | Hawaiian/ Pacific Islander | Black | Hispanic | White | 2 or more races | LEP | IDEA | 504 |
|-------------------------------|-------|--------|----------------------------|-------|----------------------------|-------|----------|-------|-----------------|-----|------|-----|
| SHELBY COUNTY | TN | 150014 | 0.2 | 2.5 | 0.1 | 66.6 | 9.2 | 20.2 | 1.2 | 5.1 | 15.0 | 0.5 |

Lesson 1 – School/District Search



Lesson 1 – School/District Search

ED.gov CIVIL RIGHTS Data Collection

CRDC > School/District Search > LEA Summary of Selected Facts > Discipline, Restraints/Seclusion Harassment/Bullying > Discipline of Students with Disabilities

SHELBY COUNTY | MEMPHIS, TN
 NCES ID: 4700148 (Survey Year: 2013)

Discipline of Students with Disabilities - School Related Arrest

% of IDEA Students Subjected to School Related Arrest¹ Chart Table

Compared to enrollment of students with disabilities, what is the race/ethnicity, sex, and LEP/disability status of students with disabilities who received a school related arrest?

Of the total students with disabilities enrolled in the district, what proportion received a school related arrest?

Race/Ethnicity

| Race/Ethnicity | Enrollment with disabilities (District) | Students in Category (District) |
|----------------|---|---------------------------------|
| Am Ind/AK Nat | 0.0% | 0.0% |
| Asian | 0.0% | 0.0% |
| Black | 27.4% | 100.0% |
| Hispanic | 1.2% | 0.0% |
| Nat HI/Pac Isl | 0.0% | 0.0% |
| Two or More | 0.0% | 0.0% |
| White | 64.2% | 0.0% |

Additional Discipline and Bullying Facts

- Discipline Report (New)
- Preschool Discipline >
- Preschool Discipline Corporal Punishment >
- Corporal Punishment Suspensions >
- In-School Suspensions
- One Out-of-School Suspension
- More Than One Out-of-School Suspension
- Expulsions >
- Expulsions with Ed Services
- Expulsions w/o Ed Services
- Under Zero-tolerance Policies

Click for table

Lesson 1 – School/District Search

Voila! Arrest table for students w/ disabilities

ED.gov CIVIL RIGHTS Data Center

CRDC > School/District Search > LEA Summary of Selected Facts > Discipline, Restraints/Seclusion Harassment/Bullying > Discipline of Students with Disabilities

SHELBY COUNTY | MEMPHIS, TN
 NCES ID: 4700148 (Survey Year: 2013)

Discipline of Students with Disabilities - School Related Arrest

% of IDEA Students Subjected to School Related Arrest¹ View Data as Counts Table > Charts

Compared to enrollment of students with disabilities, what is the race/ethnicity, sex, and LEP/disability status of students with disabilities who received a school related arrest?

Of the total students with disabilities enrolled in the district, what proportion received a school related arrest?

Race/Ethnicity

| | Enrollment with disabilities (District) | Students in Category (District) | | District |
|-------------|---|---------------------------------|-------------------|----------|
| Am | | | All IDEA Students | 0.1 % |
| Ind/AK | 0.0 % | 0.0 % | Am Ind/AK Nat | 0.0 % |
| Nat | | | Asian | 0.0 % |
| Asian | 2.7 % | 0.0 % | Black | 0.1 % |
| Black | 64.2 % | 100.0 % | Hispanic | 0.0 % |
| Hispanic | 4.9 % | 0.0 % | Nat HI/Pac Isl | 0.0 % |
| Nat | | | Two or More | 0.0 % |
| HI/Pac Isl | 0.0 % | 0.0 % | White | 0.0 % |
| Two or More | 0.8 % | 0.0 % | | |
| White | 27.4 % | 0.0 % | | |

Additional Discipline and Bullying Facts

Discipline Summary >

[Discipline Report \(New\)](#)

Preschool Discipline >

Preschool Discipline Corporal Punishment >

Corporal Punishment Suspensions >

In-School Suspensions

One Out-of-School Suspension

More Than One Out-of-School Expulsions toggle One O

Expulsions with Ed Services

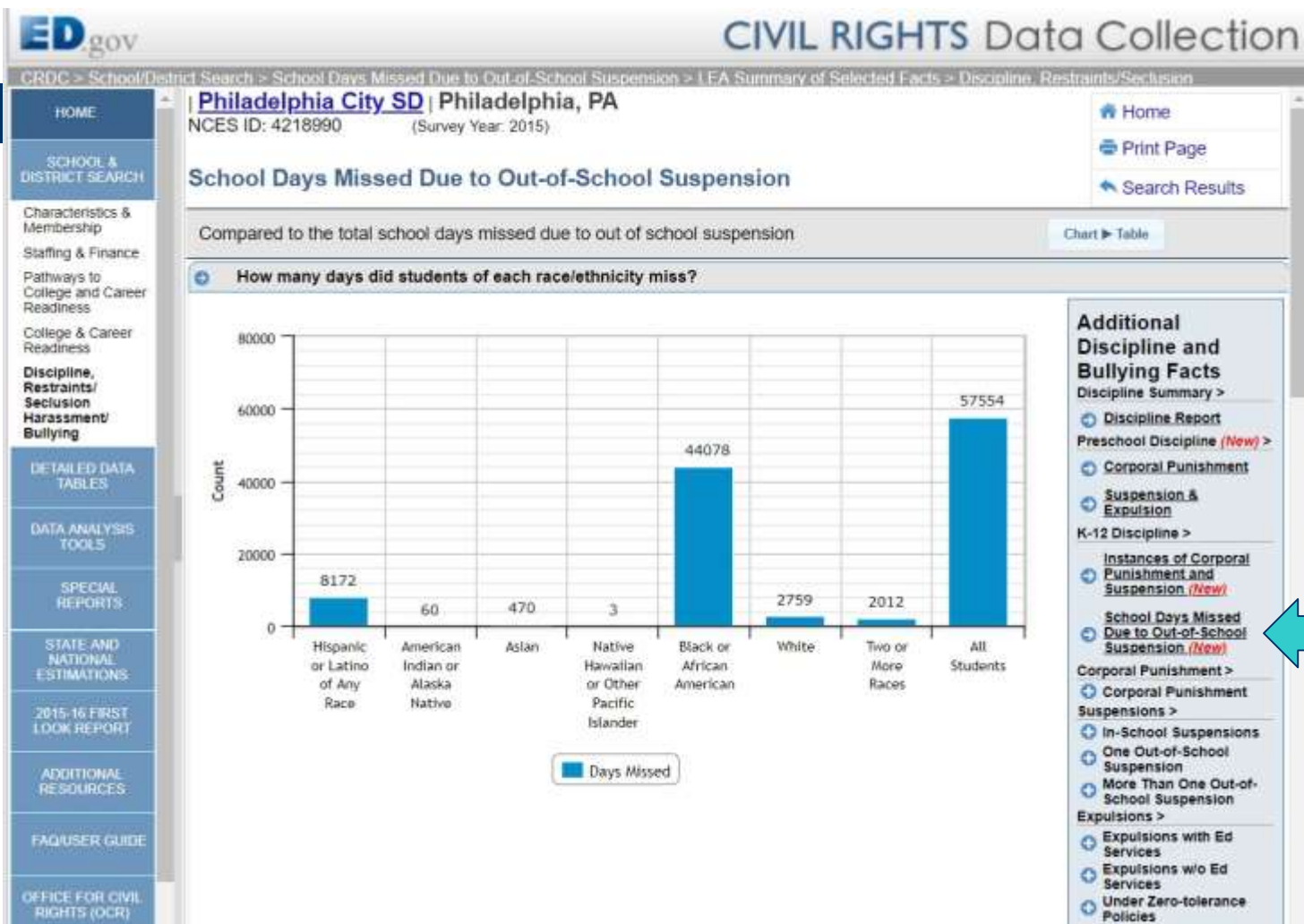
Expulsions w/o Ed Services

Under Zero-tolerance Policies

Law Enforcement >

Referrals to Law Enforcement

Lost Class Days Due to Suspension (new)



Lesson 2 – Discipline Report

The screenshot shows the ED.gov CIVIL RIGHTS Data Collection website. The header includes the ED.gov logo and the title "CIVIL RIGHTS Data Collection". Below the header is a navigation bar with the text "DATA COLLECTED FROM OUR NATION'S PUBLIC SCHOOLS". A left sidebar contains a menu with the following items: HOME, SCHOOL & DISTRICT SEARCH, DETAILED DATA TABLES, DATA ANALYSIS TOOLS, SPECIAL REPORTS, STATE AND NATIONAL ESTIMATIONS, 2015-16 FIRST LOOK REPORT, ADDITIONAL RESOURCES, FAQ/USER GUIDE, and OFFICE FOR CIVIL RIGHTS (OCR). Below the sidebar is a link: "Looking for the 2015-16 CRDC?". The main content area features five sections, each with an icon and a title: 1. "School and District Search" with a schoolhouse icon and a description: "View a summary of selected facts about a school or district as well as tables and graphs of reported data". 2. "Detailed Data Tables" with a magnifying glass icon and a description: "Explore and analyze data across schools or districts". 3. "Data Analysis Tools" with a bar chart icon and a description: "Explore discipline data across schools, districts and/or states" and "Analyze trends in students characteristic data for schools or districts". 4. "Special Reports by Schools and Districts" with a document icon and a description: "English Learner", "Discipline Report", and "Educational Equity Report". A blue speech bubble with the word "click" is positioned over the "Discipline Report" link. 5. "State and National Estimations" with a map of the United States icon and a description: "Download state and national CRDC data estimations (available for multiple CRDCs)". On the right side of the main content area, there is a red-bordered box titled "DID YOU KNOW?". It contains two sections: "The CRDC includes data about:" followed by a list of data points: Enrollment, Demographics, Preschool, Math & Science Courses, Advanced Placement, SAT & ACT, Discipline, School Expenditures, and Teacher Experience. Below this is another section: "New data items for 2015-16 CRDC include:" followed by a list: Math and science classes taught by certified teachers, Enrollment in Algebra I in Grade 7 and Geometry in Grade 8, Offenses, Pre-K discipline, Days missed due to suspensions, and Transfers to alternate schools.

ED.gov

CIVIL RIGHTS Data Collection

DATA COLLECTED FROM OUR NATION'S PUBLIC SCHOOLS

HOME

SCHOOL & DISTRICT SEARCH

DETAILED DATA TABLES

DATA ANALYSIS TOOLS

SPECIAL REPORTS

STATE AND NATIONAL ESTIMATIONS

2015-16 FIRST LOOK REPORT

ADDITIONAL RESOURCES

FAQ/USER GUIDE

OFFICE FOR CIVIL RIGHTS (OCR)

Looking for the 2015-16 CRDC?

School and District Search
View a summary of selected facts about a school or district as well as tables and graphs of reported data

Detailed Data Tables
Explore and analyze data across schools or districts

Data Analysis Tools
• Explore discipline data across schools, districts and/or states
• Analyze trends in students characteristic data for schools or districts

Special Reports by Schools and Districts
• English Learner
• Discipline Report
• Educational Equity Report

State and National Estimations
Download state and national CRDC data estimations (available for multiple CRDCs)

DID YOU KNOW?

The CRDC includes data about:

- Enrollment
- Demographics
- Preschool
- Math & Science Courses
- Advanced Placement
- SAT & ACT
- Discipline
- School Expenditures
- Teacher Experience

New data items for 2015-16 CRDC include:

- Math and science classes taught by certified teachers
- Enrollment in Algebra I in Grade 7 and Geometry in Grade 8
- Offenses
- Pre-K discipline
- Days missed due to suspensions
- Transfers to alternate schools

click

Lesson 2 – Discipline Report

ED.gov CIVIL RIGHTS Data Collection

DISCIPLINE REPORT

Welcome to the 'Discipline Report'. Follow the instructions below to select the criteria to build the report and then click "View Report".

1. **Select collection year** 2015-16 2013-14 2011-12
2. **Select the level of data** School District
3. **Further refine your report by selecting the school/district name or by other criteria**

Find Districts by Name or State

If you know the district name, then type it in the 'Find' field. Additionally, you can search by State or ID only.

District Name Philadelphia City **ID** **State** Pennsylvania

(Select all)

| | | | |
|-------------------------------------|----------------------|---------|--------------|
| <input checked="" type="checkbox"/> | Philadelphia City SD | 4218990 | Pennsylvania |
|-------------------------------------|----------------------|---------|--------------|

View your custom report:

Selected Data Set

Lesson 2 – Discipline Report

The screenshot shows the ED.gov CIVIL RIGHTS Data Collection interface. On the left is a navigation menu with options: HOME, SCHOOL & DISTRICT SEARCH, DETAILED DATA TABLES, DATA ANALYSIS TOOLS, SPECIAL REPORTS, STATE AND NATIONAL ESTIMATIONS, 2015-16 FIRST LOOK REPORT, ADDITIONAL RESOURCES, FAQ/USER GUIDE, and OFFICE FOR CIVIL RIGHTS (OCR). The main content area is titled "Discipline Report" and includes a welcome message and three numbered instructions: 1. Select collection year (radio buttons for 2015-16, 2013-14, 2011-12), 2. Select the level of data (radio buttons for School, District), and 3. Further refine your report by selecting the school/district name or by other criteria. Below these instructions are two search options: "Find Districts by Name or State" and "Search for Districts Based on Data Element Criteria". The "Search for Districts Based on Data Element Criteria" section has a "District Name" input field, a "State" dropdown menu (showing Alabama, Alaska, Arizona, Arkansas), and a "Reset" button. Below this are three expandable sections: "Characteristics, Membership, Staffing and Finance", "College and Career Readiness", and "Discipline". The "Discipline" section is expanded and shows filters for "Students who Received at Least One Out-of-School Suspension" and "Students who Received an Expulsion". The "Students who Received at Least One Out-of-School Suspension" section has dropdowns for Sex (with a value of 0), Race, LEP, IDEA, and Section 504, each followed by a percentage field. The "Students who Received an Expulsion" section has dropdowns for the same categories, with a "(student count)" label. A teal callout box with a white border contains the text "or search by criteria, such as black females suspended >20%", with a white arrow pointing to the "Race" dropdown in the "Students who Received at Least One Out-of-School Suspension" section.

ED.gov CIVIL RIGHTS Data Collection

welcome to the Discipline Report. Follow the instructions below to select the criteria to build the report and then click "View Report".

1. Select collection year 2015-16 2013-14 2011-12
2. Select the level of data School District
3. Further refine your report by selecting the school/district name or by other criteria

Find Districts by Name or State

Search for Districts Based on Data Element Criteria

District Name State
Alaska
Arizona
Arkansas

or search by criteria, such as black females suspended >20%

Characteristics, Membership, Staffing and Finance

College and Career Readiness

Discipline

Students who Received at Least One Out-of-School Suspension

Sex: 0 %

Race: %

LEP: %

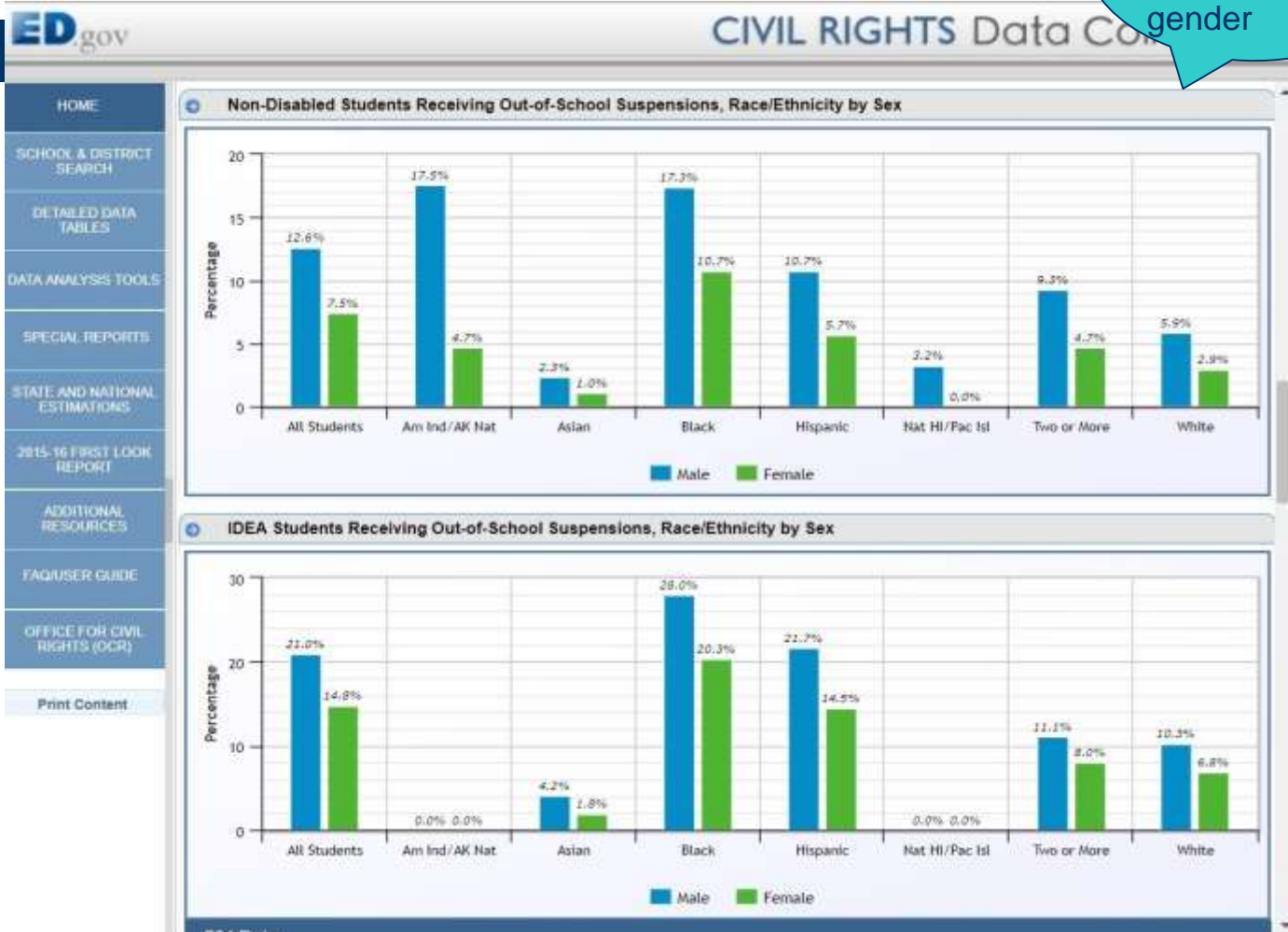
IDEA: %

Section 504: %

Students who Received an Expulsion (student count)

Lesson 2 – Discipline Report

viewing suspensions by race & gender



Using Data

END ZERO TOLERANCE

COMBATING THE SCHOOL-TO-PRISON PIPELINE

[Home](#) [Blog](#) [FAQ](#) [Using Data](#) [Our Work](#) [All Resources](#) [This Site](#)

Q Search:



[Join Our Team Working to End the School-to-Prison Pipeline](#)

OUR BLOG

[School Policing: What the Research Shows](#)

01/13/16

 [See Our Resources on School Safety](#)

LATEST UPDATES

- [School Safety is About Strong Relationships, Not Harshened Schools \(Article\)](#)
- [School Discipline Regulations Are Eminently Reasonable \(Article\)](#)
- [As the Education Department Strives Away, Civil Rights Protections, New Coalition Aims to Fight for Students \(Article\)](#)
- [California Budget Deal Might Extend Willful Defiance, Suspension Ban to All Grades \(Article\)](#)
- [The Futility of Trump to Prevent More School Shootings in America \(Article\)](#)



© 2017 by ACLU of Pennsylvania

Last updated June 25, 2018



P.O. Box 60173
Philadelphia, PA 19102
877-PHL-ACLU (748-2258)

Make suggestions or report broken links at ztp@aclupa.org

www.endzerotolerance.org



HOW TO: Analyzing and Understanding the Data

Amir Whitaker
ACLU SoCal
UCLA Researcher

DATA FLAWS AND ISSUES IN 15-16

- There are a total of 608 juvenile justice facilities in the data collection. Due to a system error **over 400 of those facilities** were not able to completely report data for data elements in the juvenile justice module. A data element that should have been reported (but was not) is identified with a -7 in the data file.
- A reserve code of -5 is used to indicate that an LEA is unable to report all required data elements in the current collection, but will be able to report those data elements in the future (action plan). Every data element related to the action plan should have a -5 in the data file. Due to a system issue, LEAs can have a mix of -5s and data values. The most common scenario is where there are -5s and 0s for those data elements related to the action plan.
- The **Sworn Law Enforcement Officers indicator question was inadvertently carried over** from the 2013-14 data collection and displayed in the submission tool for 2015-16. This carryover caused a reporting issue with the SCH_FTESECURITY_LEO data element. Although the data element was required for all schools, the data element was **skipped for** **over 69,000 of those schools.** A -9 in the data file for the SCH_FTESECURITY_LEO

- Hawaii and Florida...again
- Problematic federal interpretations

ANALYZING AND UNDERSTANDING DATA

- **Risk** = absolute values (the percentage of students suspended *at least once*).
- **Risk difference** = absolute differences. Subtract the highest group from the lowest.
- **Risk Ratio and Composition Index**- useful for conveying the injustices. They are purely relative measures, they are not recommended for comparing schools or measuring progress. They **DO NOT** reveal whether the underlying risk for suspension is high or low
- **Composition index**- compares the composition of the enrollment to the composition of a comparison group (students suspended). **MAY NOT** work for schools/districts primarily serving students of color.

Which District was Highest Suspending For Blacks?

Which had the largest Racial Gap?

| County | Black Risk % | White Risk % | Racial Gap | Composition Variance For Highest Group | Black to White Risk Ratio |
|----------------|--------------|--------------|------------|--|---------------------------|
| Baltimore City | 8 | 2 | 6 | 11% | 4.0 |
| Dorchester | 17 | 6 | 11 | 68% | 2.4 |
| Montgomery | 5 | 1 | 4 | 132% | 5.0 |
| | | | | | |

Analysis Tip: Translate to Class Time

SUSPENDED OPPORTUNITIES

There were **58,322** suspensions in **MIAMI-DADE PUBLIC SCHOOLS**

(25,819 Outdoor and 32,503 Indoor Suspensions in the 2013-14 school year. Data available at www.dadeschools.net)

THAT IS...

1,625 SUSPENSIONS EACH WEEK

325 SUSPENSIONS EACH DAY

1 SUSPENSION EACH MINUTE OF CLASS



Analysis Tips: Report Cards

PINELLAS COUNTY SCHOOLS REPORT CARD

SCHOOL DISCIPLINE

Nearly 70% of Florida school districts use suspension less than Pinellas County. Defiance/insubordination is the most frequent cause of suspension.¹

250,000+ hours of school have been missed by black students being suspended since 2010.²

54% of black students received an in-school suspension compared to 20% of white students.³

53% of students given out-of-school suspensions are black.⁴

45% of students placed in alternative schools are black.⁵

23% of blacks students without disabilities were suspended multiple times, nearly 4X the rate of white students.⁶

EQUITY AND ACADEMIC OUTCOMES

Twice as many black students drop out of school than white students.⁷

45% of black males do not graduate, compared to 27% of white males.⁸

32% of students who are held back a grade are black.⁹

75% of black students failed the FCAT reading test.¹⁰

Only 4% of students identified as "gifted" are black.¹¹

48% of students identified as "Emotionally/Behaviorally Disabled" or EBD are black.¹²

8% of teachers are black, nearly half the state average.¹³

SCHOOL ARRESTS

81% of Florida school districts arrest fewer children than Pinellas County Schools.¹⁴

2 out of 3 school arrests are for misdemeanor offenses.¹⁵

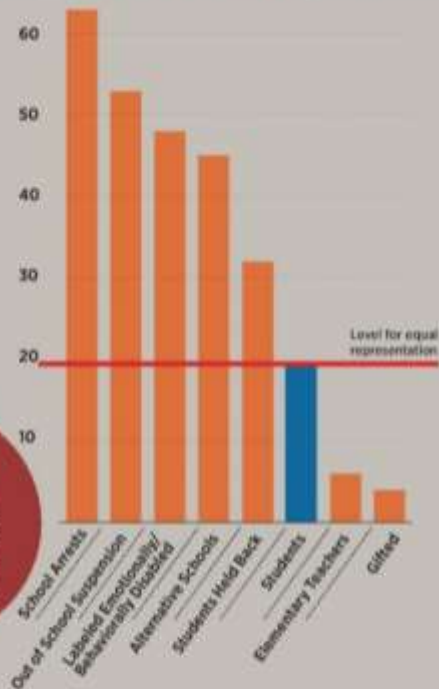
Pinellas is 3rd in the state for disproportionately arresting black children.¹⁶

21% of school arrests are for disorderly conduct, the most common reason for arrest in Pinellas County Schools. Only 2% of youth arrests in the community are for disorderly conduct.¹⁷

35X as many students are arrested for disorderly conduct in Pinellas than Miami despite Miami having 3X as many students.¹⁸

70% of disorderly conduct arrests and 63% of school arrests are of black students.¹⁹

Percentage of Black Student Representation



2013-14 School Arrests Per 1,000

| | |
|---------------|----|
| Pinellas | 12 |
| Hillsborough | 8 |
| State Average | 7 |
| Sarasota | 5 |
| Miami-Dade | 3 |

VIDEO LINK:
<https://www.youtube.com/watch?v=KAxREnIONZk>

the micah center
JUST EDUCATION. JUST ACTION.



SPLC
 Southern Poverty
 Law Center

Analysis Tips: Report Cards

Research finds that Black students receive harsher punishments than white students for the same behavior. That points to **IMPLICIT BIAS**, which is when people unconsciously make decisions based on stereotypes.

EQUITY AND SCHOOL OUTCOMES:

(All information in this section is from the 2015 calendar year and 2014-15 school year.)

The ratio of students per counselor in California averages **792:1**, ranking the state among the lowest in the nation.

The ratio of students per counselor in Stockton Unified averages even lower, at **850:1**.

42% of students in California graduated with UC/CSU required courses.

35% of students in Stockton Unified graduated with UC/CSU required courses.

Every year, **THE DISTRICT RECEIVES FUNDS FROM THE STATE** that are earmarked to benefit **ENGLISH LEARNER, LOW-INCOME, and FOSTER YOUTH** students.



For the 2016-2017 school year, the District spent nearly

\$3 MILLION
of those dollars to
FUND SCHOOL POLICE.



SCHOOL DISCIPLINE:

(All information in this section is from the 2013-2014 school year.)

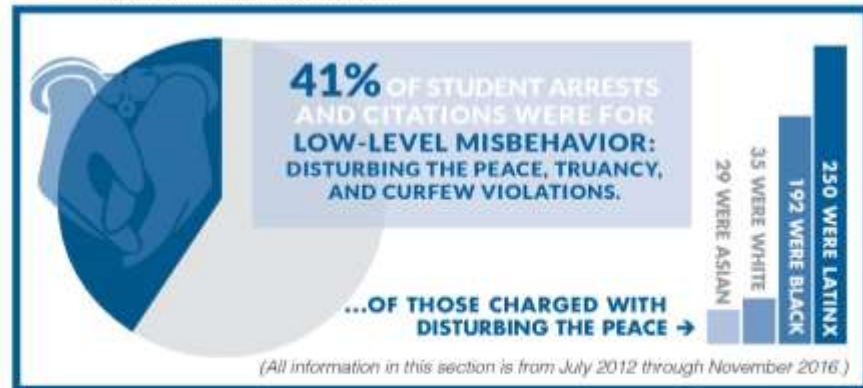
24.7% of all out of school suspensions were of Black students.

20% of expulsions were of Black students.

9% of all students with disabilities who received one out-of-school suspension were Native American or Alaskan Native students.

42% of Native American or Alaskan Native students with disabilities received at least one out-of-school suspension.

27.5% of all students with disabilities who received one out-of-school suspension were Black students.



SCHOOL ARRESTS:

(All information in this section is from July 2012 through November 2016.)

Black students are **more than 2X as likely** as white students to be arrested or cited by school police.

Black students with disabilities in the District are **more than 2X as likely** as white students with disabilities to be arrested or cited by school police.

Black students were **over 3X more likely** to be arrested or cited for the vague and subjective offense of "disturbing the peace" than every other student group in the District.

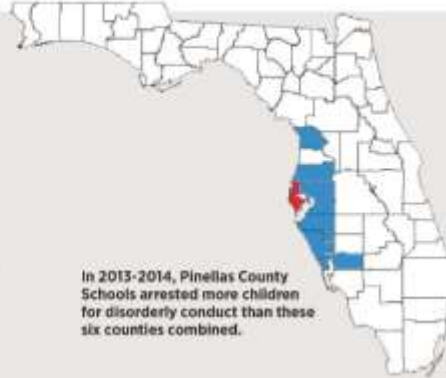
Black students in the District were arrested and cited for truancy at **about 2X the rate** of white students.

The data referred to here was for the most recent year we were able to find within each category, and was drawn from three main sources: the California Department of Education Dataquest website, <http://data1.ede.ca.gov/dataquest/>; the U.S. Department of Education Civil Rights Data Collection, <http://ocrdata.ed.gov/>; analysis of data for the years 2012-2016 that was received by the ACLU of Northern California from Stockton Unified School District pursuant to the Public Records Act; and Kidsdata.org, a program of Lucile Packard Foundation for Children's Health, <http://www.kidsdata.org/topic/126/pupilsupportpersonnel-type/table#fmt=2391&loc=2,1285&rf=84&ch=276,278,280,277,279,807,1136,1204&sortColumnId=0&sortType=asc>.

Analysis Tips: Include Solutions and Citations

REMEDIES

- Consistently staff in-school suspension sessions with certified teachers.
- Allow suspended students to receive full credit for work instead of partial or no credit.
- Revise the code of conduct to eliminate vague infractions.
- Require use of progressive discipline chart that ensures alternatives are used before suspension.
- Institute implicit bias and cultural awareness training for teachers and administrators.
- Increase efforts to recruit and retain teachers of color.
- Increase assessments to identify gifted black students.
- Evaluate and increase academic remediation and dropout prevention programs.
- Reduce bias in special education identification process.
- End the practice of arresting students for disorderly conduct.
- Use civil citation and other alternatives to arrests more in school settings.
- Establish a protocol and guidelines for all law enforcement agencies to ensure students are not needlessly arrested.
- Institute implicit bias, cultural sensitivity, and de-escalation training for officers.



RECOMMENDATIONS BY THE FLORIDA ASSOCIATION OF SCHOOL PSYCHOLOGISTS™

- Ban the use of out-of-school suspension for minor infractions including “defiance”, “disruption” and other minor, nonviolent behavioral violations
- Ban the use of out-of-school suspension and expulsion for ALL behavioral incidents involving our youngest and most vulnerable students in preschool and elementary schools
- Mandate that teachers and other school professionals take at least one college credit or 20 hours of in-service training on classroom management and/or behavior interventions as well as information related to the school-to-prison pipeline crisis.
- Require all School Resource Officers (SROs) to be trained in differentiating criminal misconduct from misbehavior as well as a broader understanding of how to de-escalate potentially violent situations
- Provide technical and financial assistance to districts and schools in order to improve

RECOMMENDATIONS FOR THE DISTRICT

INVEST FUNDS currently used for school police to hire more staff who are trained to promote a positive school climate, including restorative justice coordinators, community school resource coordinators, counselors, additional teachers, and tutors who are trained in research-based methods to address student behavior and promote a positive, safe school climate.

REQUIRE ongoing district-wide training to enhance cultural competence and combat implicit bias.

DIRECT SCHOOL POLICE not to question, stop or search students unless the conduct is related to school activity, on school grounds, during school hours, or during school-related events.

ENSURE that in the limited circumstances when school police must question students, they possess a legal warrant supported by probable cause that the student posed or poses a real and immediate physical threat to student, staff or others.

ENSURE that school police never enter a school to arrest a student unless the officer has a warrant or court order or the student presents a real and immediate physical threat to a person on campus.

MANDATE that school police never use physical force on a student, including the use of mechanical restraints, unless the student’s behavior poses an immediate danger of serious bodily injury.

IMMEDIATELY NOTIFY a student’s parent or guardian if school police have arrested, searched, restrained, placed in seclusion, or questioned the student.

COLLECT COMPREHENSIVE DATA regarding school police officers’ interactions with students, broken out by race, sex, English Learner status, and disability status. Also collect data on complaints filed against school police officers. Publicly report this data and post it on the District’s public website.

CREATE AN OVERSIGHT COMMITTEE that has the power to review applications for officers who want to work in the school district, conduct officer evaluations, investigate complaints, and review data. This committee should be made up of students, parents, educators, and community-based advocates.

1. FL DOE Survey 3: Student Discipline Data by District 2013-2014

2. Tampa Bay Times (12/1/2015). “Police Factors: Pinellas suspends black kids more than white kids every other day Florida county”

3. United States Department of Education Civil Rights Data Collection 2013-2012 (dataed.gov)

4. Pinellas County Schools (data from 2014-2015) (Reports on Progress - September 2015)

5. Public Records Request submitted by the Southern Poverty Law Center

6. United States Department of Education Civil Rights Data Collection 2013-2012 (dataed.gov)

7. FL DOE “Discipline Rates by Race by District 2013 - 2014”

8. FL DOE “High School Graduation Rate 2013-2014”

9. FL DOE “NON PROMOTION BY RACE/ETHNICITY BY SCHOOL, 2013-14 SURVEY 3 FINAL DATA”

10. Pinellas County Schools “2012 - 2014 FCIT Reading Data Chart - Black/Non-Black Students”

11. FL DOE “EXCEPTIONAL STUDENT DATA BY EXCEPTIONALITY SCHOOL YEAR 2014-15 SURVEY 2”

12. FL DOE “EXCEPTIONAL STUDENT DATA BY EXCEPTIONALITY SCHOOL YEAR 2014-15 SURVEY 2”

13. FL DOE Table 15: Total Teachers by Race/Ethnicity and Gender, Fall 2012

14. FL DOE “Disciplinary in Schools 2013-2014”

15. FL DOE “Disciplinary in Schools 2013-2014”

16. FL DOE “Racial and Ethnic Discipline Discrepancy Report 2012-2015”

17. FL DOE “Disciplinary in Schools 2013-2014”

18. FL DOE “Disciplinary in Schools 2013-2014”

19. FL DOE “Disciplinary in Schools 2013-2014”

20. Florida Association of School Psychologists Position Statement on Ending the School-to-Prison Pipeline (2015)

The data referred to here was for the most recent year we were able to find with in each category, and was drawn from three main sources: the California Department of Education Dataquest website, <http://data.education.gov/dataquest/>; the U.S. Department of Education Civil Rights Data Collection, <http://ocrdata.ed.gov/>; analysis of data for the years 2012-2016 that was received by the ACLU of Northern California from Stockton Unified School District pursuant to the Public Records Act; and Kibbutzim, a program of Lucile Packard Foundation for Children’s Health, <http://www.kibbutzim.org/html/128/vardasson/summaryofhighschool/271626x3.128560-846ch-274278,290,277,279,007,1136,12045001&level=5&sortType=asc>

DASHBOARD AND PUBLICATION PREVIEW



ESSA data requirements and timeline

- ESSA requires states and districts to publish discipline data reported under the CRDC on annual report cards
- Report cards for 2017-2018 must be published by Dec 31, 2018
- These report cards must be posted on state and district websites
- Make sure this data is on report cards!

Possible Next Steps and Closing

- Compile and report issues about accuracy of local data
 - Can send issues to Liz at eolsson@naacpldf.org
- Advocacy and Public Education
 - Use CRDC data to educate officials and the public about discipline disparities, resource inequity, etc. and to push for change!
 - The Engage for Education Equity Toolkit can help you develop a strategy:
<http://partnersforeachandeverychild.org/project/engageforedequity/>

Resources

- ❑ Dignity in Schools Campaign – “Take Action” page
<http://dignityinschools.org/>
- ❑ ACLU-PA STPP Site (see: “Using Data” page)
www.endzerotolerance.org
- ❑ ACLU-PA – Open Records Request Templates
<https://www.endzerotolerance.org/data>
- ❑ ProPublica Tool – Check the Status of Complaints
<https://projects.propublica.org/graphics/civil-rights-violations>
- ❑ Government Accountability Office Report:
<https://www.gao.gov/products/GAO-18-258>

Resources

- ❑ The Civil Rights Project Resources

<https://www.civilrightsproject.ucla.edu/resources/projects/center-for-civil-rights-remedies/school-to-prison-folder>

- ❑ State-level data on discipline in SPED

<https://www2.ed.gov/programs/osepidea/618-data/static-tables/index.html#partb-dis>

- ❑ Primer on how to measure discipline disparities

<https://supportiveschooldiscipline.org/learn/reference-guides/measuring-discipline-disparities>

- ❑ U.S. Department of Education CRDC webpage

<https://www2.ed.gov/about/offices/list/ocr/data.html>

Q & A

Any remaining questions for our panelists?

Presenter Contact Information

Harold Jordan - hjordan@aclupa.org

Amir Whitaker – Amir@aclusocal.org

To report issues with the data, please contact Liz at NAACP LDF at eolsson@naacpldf.org.